



王定一主席與行政總部高級職員於東華醫院禮堂合照

(前排左起)：韓孝述學務總主任、梁錦芳執行總監、王定一主席、
李愛清醫務總主任及吳志榮社服總主任
(後排左起)：黃平章資訊科技總主任、楊李文鸞財務總主任、黃炳賢籌募總主任、
羅志偉物業總主任、史秀英政務總主任、黎淑嫻人力資源總主任及
林耀榮稽核總主任

Mr. Eddie WANG, the Chairman, pictured with senior staff of the Administration Headquarters at the Assembly Hall of Tung Wah Hospital

(Front row from left): Mr. HON Hau-sut, Education Services Secretary
Dr. LEUNG Kam Fong, Chief Executive
Mr. Eddie WANG, Chairman
Ms. Rita LI Oi-ching, Medical Services Secretary
Mr. Stephen NG Chi-wing, JP, Community Services Secretary
(Back row from left): Mr. Tony WONG Ping-cheung, Principal Information Technology Manager
Mrs. Millan YEUNG LI Man-luen, Financial Controller
Mr. David WONG Bing-yin, Fund-raising Secretary
Mr. Arthur LO Chi-wei, Property Secretary
Ms. Stella SEE Sau-ying, Administration Secretary
Ms. Florence LAI Shuk-han, Principal Human Resources Manager
Mr. Andrew LAM Yiu-wing, Principal Auditor

2005-06

Organization, Functions & Service Centres

組織、工作及服務單位

在行政架構上，東華三院共設七科及三處，分別為醫務科、教育科、社會服務科、物業科、籌募科、政務科、財務及採購科、人力資源處、資訊科技處及稽核處。執行總監掌管東華的行政運作，並由各部門主管協助處理日常事務。

行政總部的工作

醫務科

東華三院轄下共有五間醫院，設有病床二千七百四十四張。五間醫院分別為港島區的東華醫院、東華東院及東華三院馮堯敬醫院和九龍區的廣華醫院及東華三院黃大仙醫院。

醫務科負責統籌及協調東華董事局及醫院管理局之間有關管理及發展五間醫院的一切事宜，並於需要時作出支援，以確保五間醫院有效及獨立運作。該科並負責策劃、發展、管理東華三院的醫療衛生服務及中醫藥服務，包括四間分別位於廣華醫院（與香港中文大學合作）、東華醫院（與香港大學合作）、東華三院黃大仙醫院（與香港浸會大學合作）及東華東院（與香港理工大學合作）的中醫藥科研中心、兩間中西醫藥治療中心、一間中藥藥檢中心、兩個中醫普通科門診部、兩個婦女健康普查部、一個男士健康普查部、一間長者牙齒保健及治療中心及一項長者家居復康外展服務。

教育科

東華三院開辦一間社區書院及五十一間學校，包括十八間中學、十六間小學、十五間幼稚園及兩間特殊學校。教育科負責策劃、發展及管理東華的教育服務，並促進東華屬校之間的溝通及經驗交流。

教育科設有由教育心理學家組成的輔導組，專責為學生、教師、學校輔導人員及家長設計有關學生學習與成長的輔導方案，並提供專業輔導及校本支援。

The administrative structure of the Tung Wah Group of Hospitals comprises 7 Divisions and 3 Branches, namely Medical Division, Education Division, Community Services Division, Property Division, Fund-raising Division, Administration Division, Finance & Supplies Division, Human Resources Branch, Information Technology Branch and Audit Branch. The Chief Executive is the head of administration. He is assisted by heads of various Divisions and Branches in the management of Tung Wah.

Work of Administration Headquarters

Medical Division

Tung Wah has 5 hospitals with a total of 2,744 beds. They are Tung Wah Hospital, Tung Wah Eastern Hospital and TWGHs Fung Yiu King Hospital on Hong Kong Island, and Kwong Wah Hospital and TWGHs Wong Tai Sin Hospital in Kowloon.

The Division is responsible for co-ordinating all matters relating to the 5 hospitals of Tung Wah between the Tung Wah Board of Directors and the Hospital Authority, and providing support when required so as to ensure that each hospital can operate efficiently and independently. It also plans, develops and administers the health services and Chinese medicine services of Tung Wah, which include 4 Chinese medicine clinical centres at Kwong Wah Hospital (in collaboration with The Chinese University of Hong Kong), Tung Wah Hospital (in collaboration with The University of Hong Kong), TWGHs Wong Tai Sin Hospital (in collaboration with the Hong Kong Baptist University) and Tung Wah Eastern Hospital (in collaboration with the Hong Kong Polytechnic University), 2 integrated Chinese & Western medicine treatment centres, 1 Chinese medicine control centre, 2 Chinese medicine general outpatient clinics, 2 well women clinics, 1 well men clinic, 1 dental health centre for senior citizens and an out-reaching home care services for the elderly.

Education Division

Tung Wah operates 1 community college and 51 schools, including 18 secondary schools, 16 primary schools, 15 kindergartens and 2 special schools. The Division is responsible for the planning, development and supervision of Tung Wah's education services. It also facilitates the communication and experience-sharing among Tung Wah's schools.

A team of educational psychologists under the Division provide professional guidance and psychological school-based support services for students, teachers, guidance workers and parents on various aspects relating to the learning and guidance needs of the students.

社會服務科

社會服務科負責策劃、發展及管理東華的社會福利服務，包括護理安老院、護養安老院、安老院、各類長者中心、改善家居及社區照顧服務、綜合家居照顧服務、青少年及家庭綜合服務、學校社會工作及學生輔導服務、專門輔導服務、熱線服務、兒童住宿服務、幼兒園、弱智人士日間活動中心暨宿舍、綜合職業復康中心、家居訓練及支援服務、社區精神健康照顧服務、弱能人士及視障長者護理院、專門招聘弱能人士的社會企業及長期護理院；此外策劃、發展及管理殯儀館、義莊、靈灰安置場、牌位庫、義山、廟宇及簽檔。

物業科

物業科負責策劃東華的物業發展、出租和管理轄下的物業，並監管所有服務單位及出租物業的建設及維修工程；同時為東華其他部門提供有關土地及樓宇的專業意見。

籌募科

籌募科負責策劃和籌辦各項籌款活動，以及執行與籌款有關的公關工作，包括維繫和擴展善長網絡，為推廣各項籌款活動而聯絡傳播界和籌辦宣傳活動。該科亦為行政總部提供印刷、收發、運輸及庶務等中央服務。

政務科

政務科負責監察及策劃有關籌組董事局的活動，為董事局提供文書及支援服務，處理有關東華的條例，執行東華三院歷屆總理聯誼會的行政工作，修復及保存東華三院的檔案和文物以及管理和發展東華三院文物館及東華醫院禮堂，並為行政總部管理階層擔任文書工作。同時，政務科藉着舉辦宣傳活動推廣東華的形象，並為董事局統籌社交和拜訪活動以加強與政府部門、有關機構和社會各界的聯繫；另編製機構刊物增加機構透明度及推廣東華各項服務和活動，以及協助各部門安排慶典和新聞發佈會。

Community Services Division

The Division plans, develops and administers Tung Wah's social welfare services, including care and attention homes, residential care homes for the elderly, elderly homes, various kinds of elderly centres, enhanced home and community care services, integrated home care services, integrated services for family and young people, school social work and student guidance services, specialized counselling services, hotline services, residential child care services, nursery schools, day activities centres cum hostels for the mentally handicapped, integrated vocational rehabilitation centres, home-based training and support service, community mental health care service, care and attention homes for the disabled and aged blind, social enterprises operated by disabled people and a long stay care home. It also develops and supervises the operation of funeral parlours, coffin homes, columbarium, commemoration hall, cemeteries, temples and fortune-telling stalls.

Property Division

The Division is responsible for the formulation of development plans for Tung Wah's properties, the management and letting of rental properties as well as the supervision of all Tung Wah's construction, maintenance and renovation projects. It also provides professional and technical advice for other Divisions and Branches on matters relating to land and building.

Fund-raising Division

The Division is responsible for planning and organizing fund-raising activities and handling related public relations work, including maintaining and expanding donors' network, liaising with the mass media and organizing publicity events for the promotion of Tung Wah's fund-raising activities. In addition, it provides central services such as printing, receiving and despatching, transportation and menial support for the Administration Headquarters.

Administration Division

The Division monitors procedures and organizes activities leading to the formation of the Board of Directors and provides secretarial and support services for the Board. It takes charge of the work in connection with Tung Wah's Ordinances, the administrative work of the Association of Past & Present Directors of the Tung Wah Group of Hospitals, the conservation and preservation of the archives and relics of Tung Wah, as well as the management and development of the Tung Wah Museum and the Assembly Hall of Tung Wah Hospital. It further provides secretarial support for the senior management of the Administration Headquarters. Besides promoting the corporate image of Tung Wah through publicity programmes, the Division also organizes social functions and courtesy visits for the Board of Directors to strengthen relationship with Government departments, associate organizations and the community. The Division enhances Tung Wah's transparency and publicizes its services and activities by producing corporate publications, as well as providing assistance in ceremonial events and press briefings initiated by other Divisions and Branches.

財務及採購科

財務及採購科為各部門及其屬下單位（醫院除外）提供中央會計服務，以合乎法例及東華的規定，亦負責管理東華的基金及確保各項計劃及活動獲得適當的財政資源。該科並負責搜集市場產品及物價資料，以獲得最優惠價格採購物資及服務。

人力資源處

人力資源處負責策劃及執行東華的人力資源、員工訓練及福利政策，包括監管組織架構及編制、職級審訂、員工的招聘、晉升、薪酬調整、訓練、辭職、退休、終止合約、延展服務、公積金管理、員工福利及活動、考績、紀律、勞資關係和勞工保險等。

資訊科技處

資訊科技處負責提供東華的管理訊息系統及辦公室自動化服務，包括策劃、分析、設計及程式編寫、各部門申請電腦設施的評估、硬件安裝及套裝軟件測試；此外為東華職員提供電腦訓練，以確保電腦化政策有效執行。為協助政府舒緩「數碼隔膜」問題，該處屬下東華三院數碼天地向市民推廣資訊科技的知識和認知。

稽核處

稽核處負責審查及檢討東華會計、財務及操作系統，確保在資源運用、保管和資金管理方面維持高效益。稽核處經常查核各部門及東華服務單位（醫院除外）的帳項及事務，以依循董事局的決策及東華的規定；此外實施管理稽核，確保東華有效地運用資源。

Finance & Supplies Division

The Division provides central accounting function for all Divisions and Branches and service centres (except hospitals) in keeping with both statutory and Tung Wah's requirements. It manages Tung Wah's funds and ensures that projects and activities are properly financed. It also collects market information on products and price in order to obtain the best prices for procurement of goods and services.

Human Resources Branch

The Branch is responsible for the development and implementation of policies pertaining to Tung Wah's human resources management, staff training and welfare. Its scope of work includes the management of organization structures and staff establishment, grading of posts, staff recruitment, promotions, salary administration, staff training, resignations, retirements, termination of contracts, extension of service, provident fund administration, staff welfare and activities, staff appraisal, discipline, labour relations and employees' compensation.

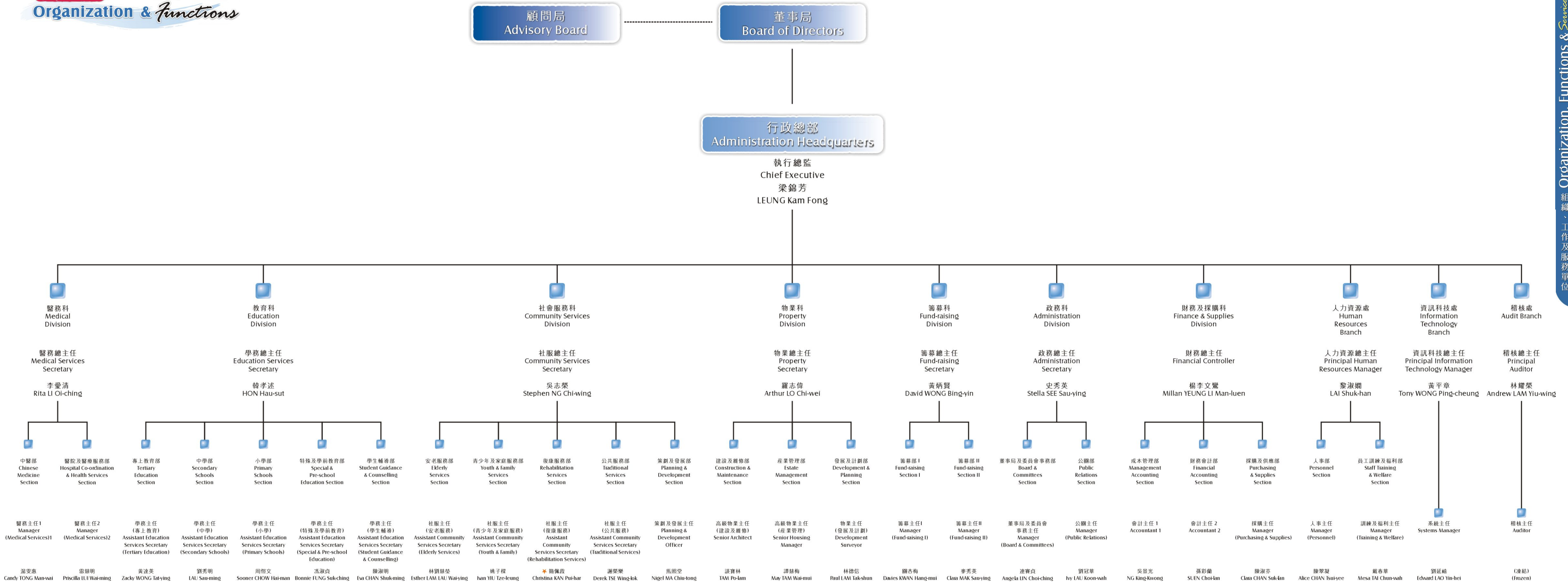
Information Technology Branch

The Branch provides management information systems and office automation services, including information technology strategy, system analysis, design and programming, computing facilities requisition evaluation as well as hardware and software testing. In addition, the Branch provides training for system users to ensure that the computerization policy is carried out properly and efficiently. For supporting the Government's policy in tackling the problem of "Digital Divide", the Branch also promotes information technology knowledge and awareness in the community through TWGHs Cyber World.

Audit Branch

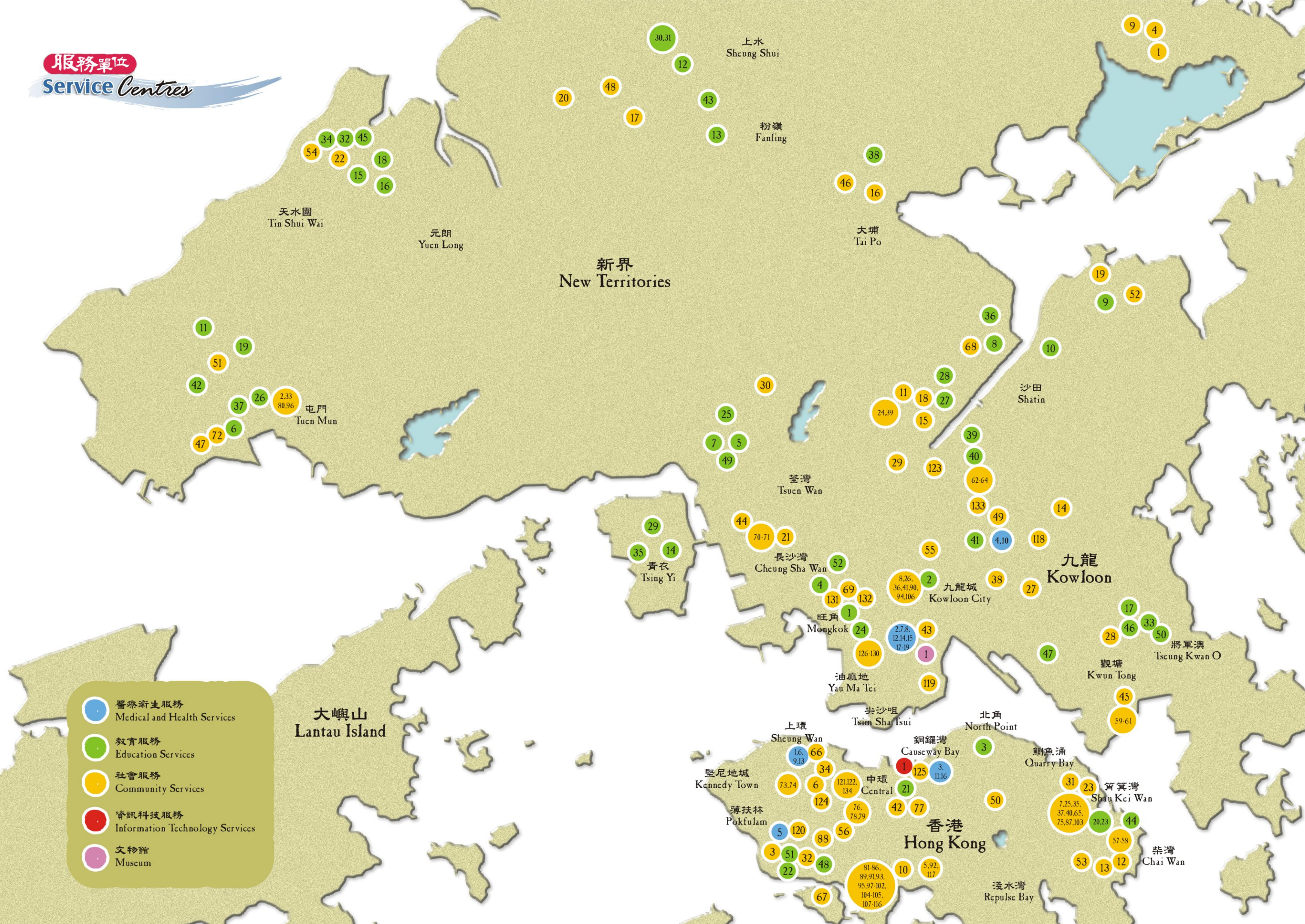
The Branch examines and reviews the adequacy and effectiveness of accounting, financial and operational systems and procedures of Tung Wah with regard to the efficient use, custodianship and management of funds. It conducts regular internal audits of the accounts and operations of all Divisions and Branches as well as service centres (except hospitals) to ensure their adherence to the Board's policies and Tung Wah's regulations. Management audits are also conducted to ensure the effective use of resources of Tung Wah.

組織結構 Organization & Functions



★ 由區域主任(南區)兼任 Doubling up in addition to her appointment as District Co-ordinator (Southern)

服務單位
Service Centres



- 醫療衛生服務
Medical and Health Services
- 教育服務
Education Services
- 社會服務
Community Services
- 資訊科技服務
Information Technology Services
- 文物館
Museum

醫療衛生服務 Medical and Health Services

醫院 Hospital	行政總監 Hospital Chief Executive	開辦年份 Year of Commencement
1. 東華醫院 Tung Wah Hospital	譚錦添醫生 Dr. K.T. TOM	1870
2. 廣華醫院 Kwong Wah Hospital	鄧燦洪醫生 Dr. C.H. TANG	1911
3. 東華東院 Tung Wah Eastern Hospital	譚錦添醫生 Dr. K.T. TOM	1929
4. 東華三院黃大仙醫院 TWGHs Wong Tai Sin Hospital	鄧燦洪醫生 Dr. C.H. TANG	1965
5. 東華三院馮堯敬醫院 TWGHs Fung Yiu King Hospital	余詩思醫生 Dr. Cissy YU	1953
服務單位 Service Centre		開辦年份 Year of Commencement
6. 東華醫院中醫普通科門診部 Tung Wah Hospital Chinese Medicine General Outpatient Clinic		1870
7. 廣華醫院中醫普通科門診部 Kwong Wah Hospital Chinese Medicine General Outpatient Clinic		1892
8. 廣華醫院—香港中文大學中醫藥臨床研究服務中心 Kwong Wah Hospital - The Chinese University of Hong Kong Chinese Medicine Clinical Research and Services Centre		2001
9. 東華醫院—香港大學中醫藥臨床教研中心 Tung Wah Hospital - The University of Hong Kong Clinical Centre for Teaching and Research in Chinese Medicine		2002
10. 東華三院黃大仙醫院—香港浸會大學 王李名珍中醫藥臨床研究服務中心 TWGHs Wong Tai Sin Hospital - The Hong Kong Baptist University Sophia Wang Chinese Medicine Clinical Research and Services Centre		2003
11. 東華東院—香港理工大學 王澤森中醫藥臨床研究服務中心 Tung Wah Eastern Hospital - The Hong Kong Polytechnic University Wilson T.S. Wang Chinese Medicine Clinical Research and Services Centre		2004
12. 東華三院王澤森中西醫藥治療中心 TWGHs Wilson T.S. Wang Integrated Chinese and Western Medicine Treatment Centre		2005
13. 東華三院王李名珍中西醫藥治療中心 TWGHs Sophia Wang Integrated Chinese and Western Medicine Treatment Centre		2005
14. 中藥藥檢中心 Chinese Medicine Control Centre		2005
15. 廣華醫院婦女健康普查部 Well Women Clinic, Kwong Wah Hospital		1990
16. 東華東院婦女健康普查部 Well Women Clinic, Tung Wah Eastern Hospital		1997
17. 東華三院男士健康普查部 TWGHs Well Men Clinic		2004
18. 東華三院長者家居復康外展服務 TWGHs Out-reaching Home Care Services for the Elderly		1997
19. 東華三院華永會長者牙齒保健及治療中心 TWGHs BMCPC Dental Health Centre for Senior Citizens		2003

教育服務 Education Services

學校 School	校長 Principal/ Headteacher	開辦年份 Year of Commencement
社區書院 Community College		
1. 香港中文大學 - 東華三院 社區書院 The Chinese University of Hong Kong - Tung Wah Group of Hospitals Community College	何文匯教授 Prof. Richard M.W. HO	2005

中學 Secondary School

2. 黃笏南中學 Wong Fut Nam College	嚴展明 YIM Chin Ming	1961
3. 李潤田紀念中學 Lee Ching Dea Memorial College	譚福基 TAM Fook Kei	1970
4. 張明添中學 Chang Ming Thien College	溫霽國 WAN Pui Kwok	1971
5. 陳兆民中學 Chen Zao Men College	蔡志超 CHOI Chi Chiu	1972
6. 辛亥年總理中學 Sun Hoi Directors' College	何如添 HO Yue Tim	1981
7. 伍若瑜夫人紀念中學 Mrs. Wu York Yu Memorial College	李賢美 LEE Yin Mei	1977
8. 馮黃鳳亭中學 Mrs. Fung Wong Fung Ting College	陳依力 CHAN Elic	1978
9. 黃鳳翎中學 Wong Fung Ling College	黃瑞森 WONG Shui Sum	1977
10. 邱金元中學 Yow Kam Yuen College	鄧錦棠 TANG Kam Tong	1985
11. 邱子田紀念中學 Yau Tze Tin Memorial College	陳英弟 CHAN Ying Tai	1982
12. 甲寅年總理中學 Kap Yan Directors' College	黃詩麗 WONG She Lai	1982
13. 李嘉誠中學 Li Ka Shing College	梁學圃 LEUNG Hok Po	1982
14. 吳祥川紀念中學 S.C. Gaw Memorial College	何禮寶 HO Lai Po	1984
15. 郭一葦中學 Kwok Yat Wai College	魏錦圖 NGAI Kam Tao	1995
16. 盧幹庭紀念中學 Lo Kon Ting Memorial College	梁志堅 LEUNG Chi Kin	1987
17. 呂潤財紀念中學 Lui Yun Choy Memorial College	叢蔣漢 CHUNG Chiang Hon	1995
18. 馬振玉紀念中學 C.Y. Ma Memorial College	周應泰 CHOW Ying Tai	1994
馬振玉紀念中學 (宿舍) C.Y. Ma Memorial College (Boarding Section)	甘肖珠 (舍監) KAM Chiu Chu (Warden)	1995
19. 鄭錫坤伉儷中學 Mr. & Mrs. Kwong Sik Kwan College	周慶中 CHOW Hing Chung	1998

小學 Primary School

20. 李志雄紀念小學 Lee Chi Hung Memorial Primary School	李建成 LEE Kin Sing	1956
21. 李賜豪小學 Li Chi Ho Primary School	冼婉紅 SIN Yuen Hung	1958
22. 鶴山學校 Hok Shan School	吳義君 NG Sin Kwan	2005
23. 東華龍岡馮耀卿夫人紀念小學 TWGHs & LKWFSL Mrs. Fung Yiu Hing Memorial Primary School	梁勵華 LEUNG Lai Wah	2005
24. 羅裕積小學 Lo Yu Chik Primary School	黎栢昌 LAI Pak Cheong	1968
25. 高可寧紀念小學 Ko Ho Ning Memorial Primary School	張瑪利 Mary CHEUNG	1977
26. 鄧肇基小學 Tang Shiu Kin Primary School	葉以欣 IP Yee Yun	1981
27. 譚兆小學 Tam Shiu Primary School	鄭偉鳳 CHENG Wai Fung	1985
28. 洗次雲小學 Sin Chu Wan Primary School	馮育意 FUNG Yuk Yi	1987
29. 黃士心小學 Wong See Sum Primary School	李秀英 (署理) LEE Sau Ying (Acting)	1988
30. 港九電器商聯會小學上午校 Hong Kong & Kowloon Electrical Appliances Merchants Association Ltd. School (AM)	張國柱 CHEUNG Kwok Chue	1988

31. 港九電器商聯會小學下午校 Hong Kong & Kowloon Electrical Appliances Merchants Association Ltd. School (PM)	馮展財 FUNG Chin Choi	1988	4. 伍若瑜護理安老院 Wu York Yu Care and Attention Home	梁碧瑋 LEUNG Bick King	1994
32. 姚達之紀念小學 Yiu Dak Chi Memorial Primary School	黃覺潮 WONG Kwok Chiu	1953	5. 余振強紀念護理安老院 Yu Chun Keung Memorial Care and Attention Home	尹可如 WAN Ho Yu	1995
33. 王余家潔紀念小學 Wong Yee Jar Jat Memorial Primary School	蘇碧婷 SO Bik Ting	1996	6. 許莫德瑜護理安老院 Hui Mok Tak Yu Care and Attention Home	王華寶 WONG Wa Po	1996
34. 李東海小學 Leo Tung-hai LEE Primary School	李漢光 LI Hon Kwong	1999	7. 方樹泉護理安老院 Fong Shu Chuen Care and Attention Home	甘綺玲 KAM Yee Ling	1999
35. 周演森小學 Chow Yin Sum Primary School	沈富明 SUM Fung Ming	2005	8. 黃祖榮護理安老院 Wong Cho Tong Care and Attention Home	黃孟芳 WONG Man Fong	2001
幼稚園 Kindergarten					
36. 廖恩德紀念幼稚園 Liu Yan Tak Memorial Kindergarten	蔡莫英 CHOY Mok Ying	1980	9. 伍蔣惠芳護理安老院 Wu Chiang Wai Fong Care and Attention Home	林樹恆 LAM Shu Hang	2002
37. 高德根紀念幼稚園 Ko Teck Kin Memorial Kindergarten	林珍英 LAM Chun Ying	1980	10. 戴麟趾安老院 David Trench Home for the Elderly	伍方惠敏 NG FONG Wai Mun	1972
38. 洪王家琪幼稚園 Hung Wong Kar Gee Kindergarten	莫惠嫻 MOK Wai Han	1983	11. 馬興秋安老院 Ma Hing Chou Home for the Elderly	王永寧 WONG Wing Ning	1976
39. 馬陳景霞幼稚園 Chan King Har Kindergarten	黃倩雲 WONG Sin Wan	1983	12. 馬李示聘安老院 Lee See Ping Home for the Elderly	馬快莉 MA Fai Lei	1979
40. 呂馮鳳紀念幼稚園 Lui Fung Faung Memorial Kindergarten	鄭愛好 KWONG OI Ho	1984	13. 呂氏(兄弟)安老院 Lui's Brothers Home for the Elderly	黃錦城 WONG Kam Shing	1979
41. 黎鄧潤球幼稚園 Lai Tang Yuen Kaw Kindergarten	黎鳳璋 LAI Fung King	1986	14. 何東安老院 Ho Tung Home for the Elderly	羅淑仁 LAW Suk Yan	1981
42. 李黃慶祥紀念幼稚園 Lee Wong Hing Cheung Memorial Kindergarten	梁淑媛 LEUNG Shuk Won	1986	15. 羅文達安老院 Lo Man Huen Home for the Elderly	林嫻花 LAM Sim Fa	1982
43. 徐展堂幼稚園 Tsui Tsin Tong Kindergarten	馬雁娜 MA Ngai Nor	1989	16. 許麗娟安老院 Hui Lai Kuen Home for the Elderly	林少華 LIN Siu Wah	1983
44. 方樹福堂幼稚園 Fong Shu Fook Tong Kindergarten	林少瑜 LAM Siu Yu	1991	17. 方王煥娣安老院 Fong Wong Woon Tei Home for the Elderly	戴桂芳 TAI Kwai Fong	1987
45. 黃朱惠芬幼稚園 Wong Chu Wai Fun Kindergarten	馬婉玲 MA Yuen Ling	1992	18. 莫黃鳳儀安老院 Mok Wong Fung Yee Home for the Elderly	黃慧娟 WONG Wai Kuen	1987
46. 力勤幼稚園 Nickon Kindergarten	梁小玲 LEUNG Siu Ling	1992	19. 陳嫻安老院 Chan Han Home for the Elderly	陳鳳儀 CHAN Fung Yee	1990
47. 黃士心幼稚園 Wong See Sum Kindergarten	李綺娥 LI Yee Ngor	1995	20. 寶鍾全英安老院 Po Chung Chuen Ying Home for the Elderly	梁旋勳 LEUNG Suen Fan	1991
48. 田灣幼稚園 Tin Wan Kindergarten	黃玉卿 WONG Yuk Hing	1998	21. 馬鄭淑英安老院 Ma Cheng Shuk Ying Home for the Elderly	劉麗芬 LAU Lai Fun	1991
49. 王胡麗明幼稚園 Wong Wu Lai Ming Kindergarten	林燕敏 LAM Yin Man	2001	22. 梁昌紀念安老院 Y.C. Liang Memorial Home for the Elderly	黃淑嫻 WONG Shuk Han	1992
50. 香港華都獅子會幼稚園 Lions Club of Metropolitan Hong Kong Kindergarten	梁小玲 (兼任) LEUNG Siu Ling (Doubling Sideways)	2004	23. 香港西區婦女福利會護養安老院 Women's Welfare Club Western District, Hong Kong Residential Care Home for the Elderly	鄧素嫻 TANG So Han	2003
特殊學校 Special School					
51. 徐展堂學校 Tsui Tsin Tong School	王鳳英 WONG Fung Ying	1981	24. 王澤森長者地區中心 Wilson T.S. Wang District Elderly Community Centre	劉潔明 LAU Kit Ming	1987
徐展堂學校(宿舍) Tsui Tsin Tong School (Boarding Section)	李國權(舍監) LI Kwok Kuen (Warden)	1997	25. 方樹泉長者地區中心 Fong Shu Chuen District Elderly Community Centre	伍芷君 NG Tsz Kwan	1999
52. 群芳啓智學校 Kwan Fong Kai Chi School	邱玩文 YAU Woon Man	1989	26. 黃祖榮長者地區中心 Wong Cho Tong District Elderly Community Centre	何玉眉 HO Yuk Mei	2001
群芳啓智學校(宿舍) Kwan Fong Kai Chi School (Boarding Section)	黃華舜(舍監) WONG Wah Shun (Warden)	1989	27. 龐永紹長者鄰舍中心 Pong Wing Shiu Neighbourhood Elderly Centre	何小燕 HO Siu Yin	1984
社會服務 Community Services					
服務單位 Service Centre	主任 Supervisor	開辦年份 Year of Commencement			
安老服務 Elderly Services					
1. 包兆龍護理安老院 Pao Siu Loong Care and Attention Home	陳麗英 CHAN Lai Ying	1985	28. 方肇彝長者鄰舍中心 Fong Shiu Yee Neighbourhood Elderly Centre	吳瑞麒 NG Shui Ki	1989
2. 戴東培護理安老院 Tai Tung Pui Care and Attention Home	謝梅格 TSE Mui Kark	1991	29. 方潤華長者鄰舍中心 Fong Yun Wah Neighbourhood Elderly Centre	簡栢輝 KAN Pak Fai	1989
3. 賽馬會護理安老院 Jockey Club Care and Attention Home for the Elderly	郭嘉琪 KWOK Ka Kei	1991	30. 王李名珍荃灣長者鄰舍中心 Mrs. Wang Li Ming Tzun Tsuen Wan Neighbourhood Elderly Centre	馮家盛 FUNG Ka Shing	1997

31. 胡其廉長者鄰舍中心 Wu Ki Lim Neighbourhood Elderly Centre	翟妙思 CHAK Miu Sze	2003	56. 蕭旺李滿福幼兒園 Shiu Wong Lee Moon Fook Nursery School * △ #	周楚娟 CHAU Chor Kuen	1997
32. 王少清長者中心 Wong Shiu Ching Centre for the Elderly	梁慧芳 LEUNG Wai Fong	1982	57. 樂賢兒童之家 Lok Yin Small Group Home	翁慧敏 YUNG Wai Man	1993
33. 戴東培長者日間護理中心 Tai Tung Pui Day Care Centre for the Elderly	黃智慧 WONG Chi Wai	1991	58. 樂思兒童之家 Lok Sze Small Group Home *	翁慧敏 YUNG Wai Man	1993
34. 梅艷芳長者日間護理中心 Anita Mui Day Care Centre for the Elderly	何淑文 HO Suk Man	1995	59. 學勤兒童之家 Hok Kan Small Group Home *	黎秀雯 LAI Sau Man	1995
35. 方樹泉長者日間護理中心 Fong Shu Chuen Day Care Centre for the Elderly	陳秀霞 CHAN Sau Ha	1999	60. 學毅兒童之家 Hok Ngai Small Group Home *	黎秀雯 LAI Sau Man	1995
36. 黃祖榮長者日間護理中心 Wong Cho Tong Day Care Centre for the Elderly	曾潔好 TSANG Kit Ho	2001	61. 學謙兒童之家 Hok Him Small Group Home *	黎秀雯 LAI Sau Man	1995
37. 改善家居及社區照顧服務 (東區) Enhanced Home and Community Care Services (Eastern District)	黃詠濱 WONG Wing Chi	2001	62. 慈真兒童之家 Tsz Chun Small Group Home +	陳穎琪 CHAN Wing Kei	1996
38. 改善家居及社區照顧服務(九龍城) Enhanced Home and Community Care Services (Kowloon City)	馮穎賢 FUNG Wing Yin	2005	63. 慈慧兒童之家 Tsz Wai Small Group Home	馮寶如 FUNG Po Yue	1996
39. 林百欣綜合家居照顧服務中心 Lim Por Yen Integrated Home Care Services Centre	劉潔明 LAU Kit Ming	2004	64. 慈美兒童之家 Tsz Mei Small Group Home	翁慧敏 YUNG Wai Man	1996
40. 方樹泉綜合家居照顧服務中心 Fong Shu Chuen Integrated Home Care Services Centre	伍芷君 NG Tsz Kwan	2004	65. 頤妍宿舍 Wing Yin Hostel	蔡瑞梅 CHOI Shui Mui	1999
41. 黃祖榮綜合家居照顧服務中心 Wong Cho Tong Integrated Home Care Services Centre	何玉眉 HO Yuk Mei	2004	66. 寄養服務 Foster Care Service	陳穎琪 CHAN Wing Kei	2005
青少年及家庭服務 Youth & Family Services			67. 賽馬會利東綜合服務中心 (方潤華服務處) Jockey Club Lei Tung Integrated Services Centre (Fong Yun Wah Service Unit)	彭桓基 PANG Woon Kei	2000
42. 伍尚能紀念幼兒園 Ng Sheung Ian Memorial Nursery School * △ #	蔡靜賢 TSOI Ching Yin	1968	68. 賽馬會沙田綜合服務中心 (方樹福堂服務處)(穗禾服務處) Jockey Club Shatin Integrated Services Centre (Fong Shu Fook Tong Service Unit) (Sui Wo Service Unit)	莊佩華 CHONG Pui Wah	2002
43. 羅黃碧珊幼兒園 Lo Wong Pik Shan Nursery School * △ #	鍾綿麗 CHUNG Min Lai	1978	69. 賽馬會大角咀綜合服務中心 (田家炳服務處)(方樹泉服務處) Jockey Club Tai Kok Tsui Integrated Services Centre (Tin Ka Ping Service Unit) (Fong Shu Chuen Service Unit)	劉劍雲 LAU Kim Wun	2002
44. 香港獅子會幼兒中心 Lions Club of the Peak, Hong Kong Nursery School * △ #	李燕玲 LI Ying Ling	1978	70. 余墨緣綜合服務中心 Yu Mak Yuen Integrated Services Centre	婁振陽 LOW Chen Yang	2004
45. 陳燭明幼兒園 Chan Han Nursery School * △ #	吳敏儀 NG Mun Yee	1979	71. 凌瑞英中心 Ling Sui Ying Centre	婁振陽 LOW Chen Yang	2005
46. 方麗明幼兒園 Fong Lai Ming Nursery School * △ #	譚笑芬 TAM Siu Fan	1984	72. 雷詠祥兒童中心 Lui Wing Cheung Children Centre	香燕君 HEUNG Yin Kwan	1984
47. 田家炳幼兒園 Tin Ka Ping Nursery School * △ #	岑采穎 SHUM Tsoi Wing	1985	73. 學校社會工作辦事處 School Social Work Office	何惠玲 HO Wai Ling	1999
48. 洪王家琪幼兒園 Hung Wong Kar Gee Nursery School * △ #	司徒瑞萍 SZETO Shui Ping	1986	74. 學生輔導服務辦事處 Student Guidance Service Office	冼翠珊 SIN Chui Shan	2004
49. 方肇彝幼兒園 Fong Shiu Yee Nursery School * △ #	萬美貞 MAN Mei Ching	1988	75. 越峰成長中心 Cross Centre	鍾燕婷 CHUNG Yin Ting	2002
50. 方樹泉幼兒園 Fong Shu Chuen Nursery School * △ #	楊淑寬 YANG Shuk Fun	1990	76. 健康理財家庭輔導中心 Healthy Budgeting Family Debt Counselling Centre	梁翠環 LEUNG Tsui Wan	2003
51. 方譚遠良幼兒園 Fong Tam Yuen Leung Nursery School * △ #	何麗英 HO Lai Ying	1991	77. 平和坊 Even Centre	陳美璐 CHAN Mei Lo	2003
52. 南九龍獅子會幼兒園 Lions Club of South Kowloon Nursery School * △ #	楊美雲 YOUNG Mei Wan	2000	78. 親子熱線 Child Care Hotline	梅偉強 MUI Wai Keung	1992
53. 捷和鄭氏幼兒園 Chiap Hua Cheng's Nursery School * △ #	梁鳳瑜 LEUNG Fung Yu	2001	79. 東華關懷熱線 Tung Wah Cares Hotline	梅偉強 MUI Wai Keung	2001
54. 九龍崇德社幼兒園 Zonta Club of Kowloon Nursery School * △ #	陳麗娟 CHAN Lai Kuen	2001	* 設有兼收弱能兒童服務 Provides integrated programme for handicapped children		
55. 群芳幼兒園 Kwan Fong Nursery School △ #	黎淑媚 LAI Suk Mei	1988	△ 設有日間暫託幼兒服務名額 Provides occasional child care programme		
			+ 為八名十至十八歲男童提供住宿照顧 Provides residential placement for 8 boys aged from 10 to 18		
			# 附設延展時間幼兒服務 Provides extended hours child care service		

復康服務 Rehabilitation Services			110. 賽馬會健樂之家 Jockey Club Kin Lok Home			王介君 WONG Kai Kwan	2001
80. 戴東培日間活動中心 Tai Tung Pui Day Activity Centre	鄧潘順蓮 TANG POON Shun Lin	1991	111. 賽馬會頤安護理安老院 Jockey Club Yee On Care and Attention Home			蘇偉祥 SO Wai Cheung	1997
81. 賽馬會展賢日間活動中心 Jockey Club Tsin Yin Day Activity Centre	方天嬌 FONG Tin Kiu	1997	112. 賽馬會頤養護理安老院 Jockey Club Yee Yeung Care and Attention Home			王美蓮 WONG Mei Lin	1998
82. 賽馬會展勤日間活動中心 Jockey Club Tsin Kan Day Activity Centre	關翠萍 KWAN Chui Ping	1997	113. 賽馬會頤樂護理安老院 Jockey Club Yee Lok Care and Attention Home			王笑嫻 WONG Siu Han	1998
83. 賽馬會展恆日間活動中心 Jockey Club Tsin Hang Day Activity Centre	鍾麗邦 CHUNG Lai Pong	1998	114. 賽馬會頤康護理安老院 Jockey Club Yee Hong Care and Attention Home			羅金成 LAW Kam Sing	1998
84. 賽馬會展毅日間活動中心 Jockey Club Tsin Ngai Day Activity Centre	劉杏萍 LAU Hang Ping	1998	115. 賽馬會頤泰護理安老院 Jockey Club Yee Tai Care and Attention Home			廖道明 LIU To Ming	1998
85. 賽馬會展誠日間活動中心 Jockey Club Tsin Shing Day Activity Centre	梁敏潔 LEUNG Mun Kit	1998	116. 賽馬會頤景護理安老院 Jockey Club Yee King Care and Attention Home			唐婉欣 TONG Yuen Yan	1998
86. 賽馬會展翔日間活動中心 Jockey Club Tsin Cheung Day Activity Centre	于敏慧 YU Man Wai	1998	117. 楊成紀念長期護理院 Yeung Sing Memorial Long Stay Care Home			尹可如 WAN Ho Yu	1995
87. 方樹泉日間活動中心 Fong Shu Chuen Day Activity Centre	李潔儀 LEE Kit Yi	1999	公共服務 Traditional Services				
88. 莫羅瑞華綜合職業復康中心 Mok Law Sul Wah Integrated Vocational Rehabilitation Centre	馮會卿 FUNG Wui Hing	1994	118. 鑽石山殯儀館 Diamond Hill Funeral Parlour			曾自強 TSANG Che Keung	1977
89. 賽馬會藝進綜合職業復康中心 Jockey Club Ngai Chun Integrated Vocational Rehabilitation Centre	馮會卿 FUNG Wui Hing	1997	119. 萬國殯儀館 International Funeral Parlour			岑維章 SHUM Wai Cheung	1980
90. 黃祖榮綜合職業復康中心 Wong Cho Tong Integrated Vocational Rehabilitation Centre	周樂明 CHOW Lok Ming	2001	120. 東華義莊、義山及靈灰安置場 Tung Wah Coffin Home, Cemeteries and Columbarium			林志超 LAM Chi Chiu	1899
91. 樂群家居訓練及支援服務 Lok Kwan Home-based Training and Support Service	葉麗芬 IP Lai Fun	2002	121. 東華三院文武廟 TWGHs Man Mo Temple			林志超 LAM Chi Chiu	1847
92. 樂康社區精神健康照顧服務 Lok Hong Community Mental Health Care Service	尹可如 WAN Ho Yu	2005	122. 東華三院列聖宮 TWGHs Litt Shing Kung			林志超 LAM Chi Chiu	1847
93. 創穀蔬果加工及批發服務 Enterprise Vegetable & Fruit Processing and Supply Service	黃志聰 WONG Chi Chung	2002	123. 慈雲山觀音佛堂 Kwun Yum Temple, Tsz Wan Shan			林志超 LAM Chi Chiu	1853
94. 華欣綜合清潔社 Prosperous Cleaning Service	楊秀蘭 YEUNG Sau Lan	2005	124. 太平山街廣福祠 Kwong Fook Tsz, Tai Ping Shan Street			鍾乃堅 CHUNG Nai Kin	1856
95. 自在軒 "Take a Break" Catering Service	鄭榮亮 KWONG Wing Leung	2005	125. 灣仔洪聖廟 Hung Shing Temple, Wan Chai			黃玉愛 WONG Yuk Oi	1860
96. 戴東培宿舍 Tai Tung Pui Hostel	鄧潘順蓮 TANG POON Shun Lin	1991	126. 油麻地天后廟 Tin Hau Temple, Yaumatei			鄭達文 KWONG Tat Man	1865
97. 賽馬會展賢宿舍 Jockey Club Tsin Yin Hostel	方天嬌 FONG Tin Kiu	1997	127. 油麻地福德祠 Fook Tak Tsz, Yaumatei			黃灼然 WONG Cheuk Yin	1865
98. 賽馬會展勤宿舍 Jockey Club Tsin Kan Hostel	關翠萍 KWAN Chui Ping	1997	128. 油麻地社壇 Shea Tan, Yaumatei			蘇錦漢 SO Kam Hon	1865
99. 賽馬會展恆宿舍 Jockey Club Tsin Hang Hostel	鍾麗邦 CHUNG Lai Pong	1998	129. 油麻地城隍廟 Shing Wong Temple, Yaumatei			鍾乃堅 CHUNG Nai Kin	1972
100. 賽馬會展毅宿舍 Jockey Club Tsin Ngai Hostel	劉杏萍 LAU Hang Ping	1998	130. 油麻地書院 The School, Yaumatei			林志超 LAM Chi Chiu	1972
101. 賽馬會展誠宿舍 Jockey Club Tsin Shing Hostel	梁敏潔 LEUNG Mun Kit	1998	131. 福全街洪聖廟 Hung Shing Temple, Fuk Tsun Street			李錦芳 LI Kam Fong	1881
102. 賽馬會展翔宿舍 Jockey Club Tsin Cheung Hostel	于敏慧 YU Man Wai	1998	132. 山東街水月宮 Shui Yuet Kung, Shan Tung Street			黃玉卿 WONG Yuk Hing	1884
103. 方樹泉宿舍 Fong Shu Chuen Hostel	李潔儀 LEE Kit Yi	1999	133. 黃大仙簽品哲理中心 Wong Tai Sin Fortune-telling & Oblation Arcade			鄭景彬 CHENG King Bun	1956
104. 賽馬會藝精宿舍 Jockey Club Ngai Ching Hostel	黃秀儀 WONG Sau Yee	1997	134. 善德宮 Virtue Court			陳詠霞 CHAN Wing Ha	1993
105. 賽馬會藝博宿舍 Jockey Club Ngai Pok Hostel	黃秀儀 WONG Sau Yee	1998	資訊科技服務 Information Technology Services				
106. 黃祖榮宿舍 Wong Cho Tong Hostel	周樂明 CHOW Lok Ming	2001	服務單位 Service Centre	中心經理 Centre Manager	開辦年份 Year of Commencement		
107. 賽馬會健怡之家 Jockey Club Kin Yee Home	周修中 CHOW Sau Chung	1997	1. 東華三院數碼天地 TWGHs Cyber World			羅冠章 LAW Kwun Cheung	2004
108. 賽馬會健輝之家 Jockey Club Kin Fai Home	唐曉紅 TANG Xiao Hong	1998	文物館 Museum				
109. 賽馬會健逸之家 Jockey Club Kin Yat Home	許偉光 HUI Wai Kwong	1998	文物館 Museum	館長 Curator	開辦年份 Year of Commencement		
			1. 東華三院文物館 Tung Wah Museum			梁詠詩 LEUNG Wing Sze	1970