

機構摘要

Corporate Highlights

善款及院本資源運用

Allocation of Donation Income and Internal Resources 2017/2018

本院不會從
公眾善款中扣除
活動及行政費用

No Event and
Administration Costs
Be Deducted from
Public Donations

\$408,000,000

善款收入
Donation Income

\$335,000,000

東華三院院本資源
TWGHs Internal Resources

\$169,000,000

教育服務發展項目撥款
Allocated to Education Service
Development Projects

\$366,000,000

社會服務發展項目撥款
Allocated to Community
Service Development
Projects

\$208,000,000

醫療衛生服務發展項目撥款
Allocated to Medical and Health
Service Development Projects

行政及支援支出

Administration and Supporting Functions Expenditure

本院總支出
The Group's
Total Expenditure

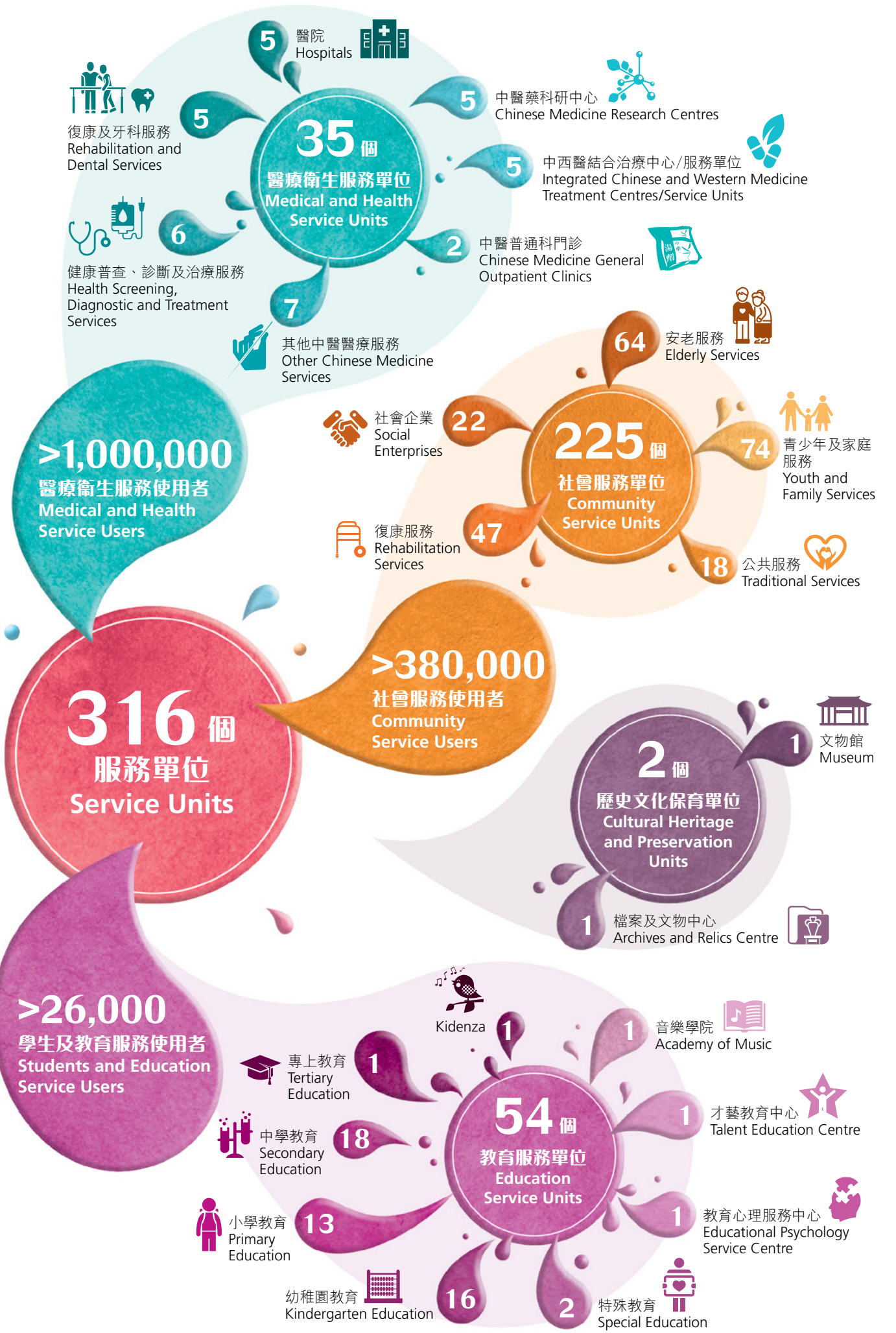
\$4,799,795,000

本院屬下5間醫院的經常性
支出不計算在內。
Recurrent Expenditure of
TWGHs' 5 Affiliated Hospitals
Were Excluded.

約
about **4%**

\$197,130,000

行政及支援支出全數由本院營運收入
支付，不涉及任何捐款。
Administration and Supporting
Functions Expenditure Fully Funded
by The Group's Operating Income,
and Without Using
Any Donations.



5 醫院 Hospitals

5 中醫藥研究中心 Chinese Medicine Research Centres

5 中西醫結合治療中心/服務單位 Integrated Chinese and Western Medicine Treatment Centres/Service Units

5 中醫普通科門診 Chinese Medicine General Outpatient Clinics

6 其他中醫醫療服務 Other Chinese Medicine Services

7 復康及牙科服務 Rehabilitation and Dental Services

6 健康普查、診斷及治療服務 Health Screening, Diagnostic and Treatment Services

35 個
醫療衛生服務單位
Medical and Health Service Units

>1,000,000
醫療衛生服務使用者
Medical and Health Service Users

22 社會企業 Social Enterprises

47 復康服務 Rehabilitation Services

225 個
社區服務單位
Community Service Units

64 安老服務 Elderly Services

74 青少年及家庭服務 Youth and Family Services

18 公共服務 Traditional Services

>380,000
社區服務使用者
Community Service Users

2 個
歷史文化保育單位
Cultural Heritage and Preservation Units

1 檔案及文物中心 Archives and Relics Centre

1 文物館 Museum

>26,000
學生及教育服務使用者
Students and Education Service Users

1 專上教育 Tertiary Education

18 中學教育 Secondary Education

13 小學教育 Primary Education

16 幼稚園教育 Kindergarten Education

1 Kidenza

54 個
教育服務單位
Education Service Units

1 音樂學院 Academy of Music

1 才藝教育中心 Talent Education Centre

1 教育心理服務中心 Educational Psychology Service Centre

2 特殊教育 Special Education